



GAT MONTHLY MEMBERSHIP PROGRESS REPORT

Results as of: 5/31/2023

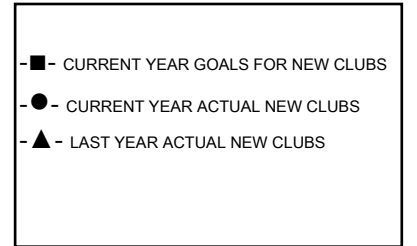
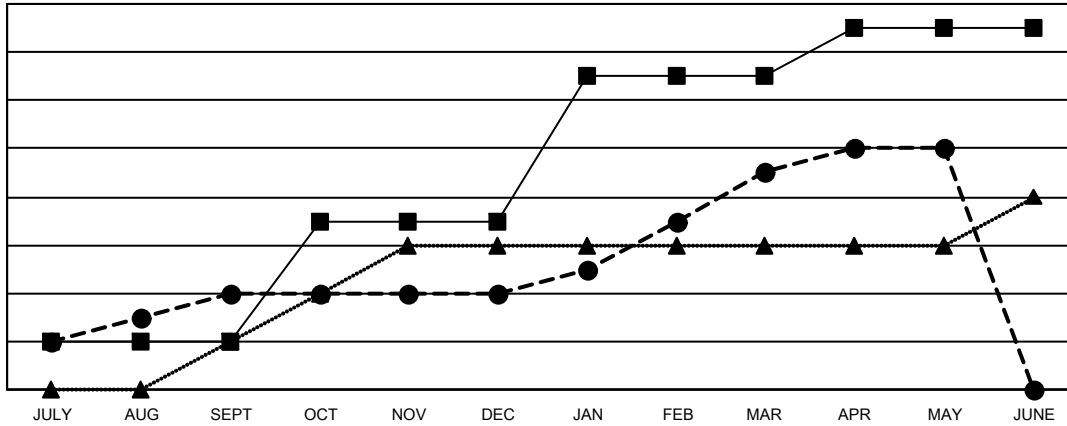
Multiple District A

LOCATION: ONTARIO

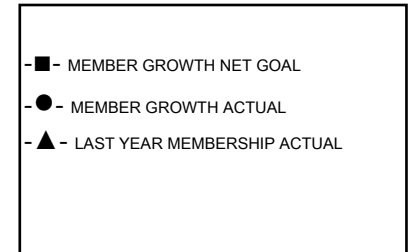
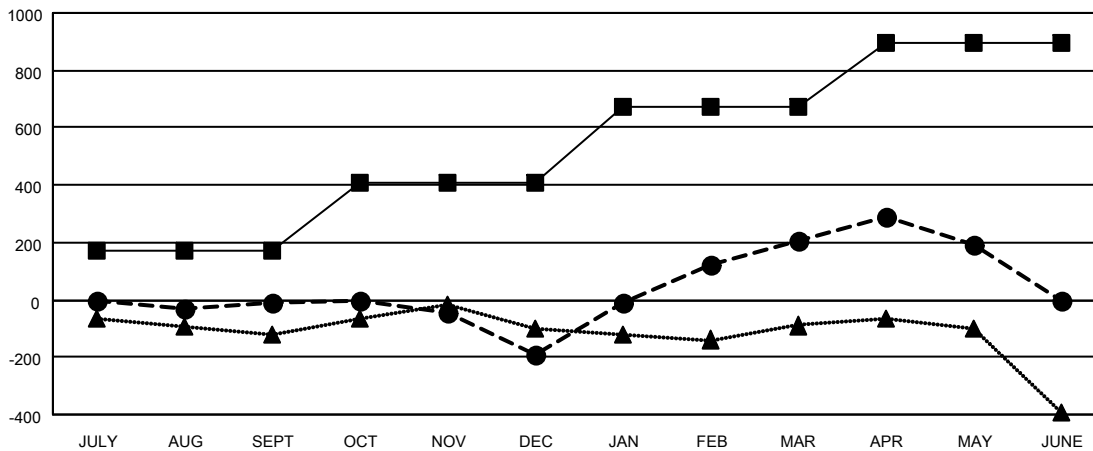
Clubs			
RESULTS FOR 2022-2023			
QUARTER	NEW CLUB GOAL	NEW CLUBS	DROPPED CLUBS
JULY/AUG/SEPT	2	4	3
OCT/NOV/DEC	5	0	6
JAN/FEB/MAR	6	5	2
APR/MAY/JUNE	2	1	1

Members			
RESULTS FOR 2022-2023			
QUARTER	MEMBER GROWTH NET GOAL	MEMBER GROWTH ACTUAL	DROPPED MEMBERS ACTUAL (including transfers)
JULY/AUG/SEPT	170	372	331
OCT/NOV/DEC	240	479	605
JAN/FEB/MAR	260	732	282
APR/MAY/JUNE	225	367	339

GOALS AND ACTUAL NEW CLUBS CUMULATIVE



GOALS AND ACTUAL MEMBERS CUMULATIVE



DROPPED CLUBS: 12	
DROPPED MEMBERS	
DECEASED	207
CLUB CANCELLED	9
OTHER	1,341
TOTAL	1,557

357 CLUBS OF 538 ADDED 1 OR MORE NEW MEMBERS

[CLICK HERE FOR CUMULATIVE MEMBERSHIP DATA](#)

GENDER DISTRIBUTION	
MALE	7,975 (64.35%)
FEMALE	4,417 (35.64%)
NON BINARY	0 (0.00%)
PREFER NOT TO ANSWER	1 (0.01%)
TOTAL FAMILY UNIT MEMBERS	2,213
FAMILY MEMBERS PAYING HALF DUES	1,145